



House

4 BURTON CLOSE, LUTTERWORTH, LE17 4FJ

PCM

£1,250 PCM

FEATURES

- Lutterworth Town
- Unfurnished Property
- Sorry, No Smokers
- Sorry, No DSS
- 3 Bedrooms
- House
- Gas C/H
- Medium Sized Garden
- Garage Parking
- 1 Reception



HOWKINS & HARRISON

3 Bedroom House located in Lutterworth

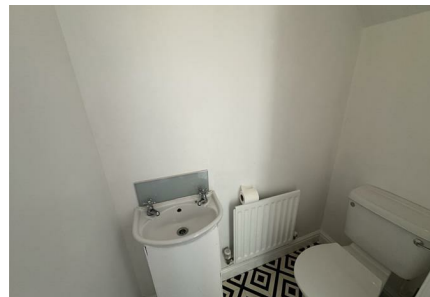
LUTTERWORTH | 12A MARKET STREET, LUTTERWORTH, LEICESTERSHIRE, LE17 4EH



LUTTERWORTH | 12A MARKET STREET, LUTTERWORTH, LEICESTERSHIRE, LE17 4EH



LUTTERWORTH | 12A MARKET STREET, LUTTERWORTH, LEICESTERSHIRE, LE17 4EH



LUTTERWORTH | 12A MARKET STREET, LUTTERWORTH, LEICESTERSHIRE, LE17 4EH

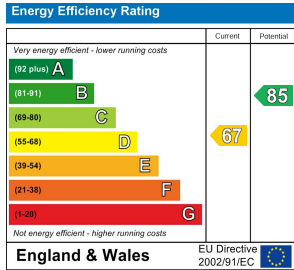
Call us on

01455 559203

<https://howkinsandharrison.co.uk/>

Council Tax Band

D



Agents Note: Whilst every care has been taken to prepare these particulars, they are for guidance purposes only. All measurements are approximate and are for general guidance purposes only and whilst every care has been taken to ensure their accuracy, they should not be relied upon and potential buyers are advised to recheck the measurements.

HOWKINS &
HARRISON